



# HTTP Application Programming Interface (API)

**Version : 1.2**

**Date : 12 March 2013**

©Web 123 Sdn Bhd, 2013 - Confidential and Proprietary

This document is copyrighted. No part of this document may in any form or by any means be reproduced, stored in a retrieval system or transmitted without prior written permission from Web 123 Sdn Bhd



## Contents

|                                      |           |
|--------------------------------------|-----------|
| <b>1. Document History</b>           | <b>3</b>  |
| <b>2. Abbreviation</b>               | <b>3</b>  |
| <b>3. Introduction</b>               | <b>4</b>  |
| <b>4. System Requirement</b>         | <b>4</b>  |
| <b>5. API List</b>                   |           |
| <b>5.1 Send MT message</b>           | <b>5</b>  |
| <b>5.2 Check transaction status</b>  | <b>7</b>  |
| <b>5.3 Check credit balance</b>      | <b>8</b>  |
| <b>5.4 DN URL Transaction status</b> | <b>9</b>  |
| <b>6. Appendix</b>                   | <b>10</b> |

## 1.0 Document History

| Date      | Document Version | Document Description / Changes to document |
|-----------|------------------|--|
| 1/8/08    | 1.0              | Document Creation                          |
| 5/5/09    | 1.1              | Update on error code                       |
| 12/3/2013 | 1.2              | Update on DN URL Transaction Status        |

## 2.0 Abbreviation

| Abbreviation | Full Description and explanation   |
|--------------|--|
| CP           | Content Provider – Customers connecting to onewaysms gateway   |
| HTTP         | Hyper Text Transport Protocol – Protocol used for CP to communicate with onewaysms gateway                           |
| MSISDN       | Mobile Station International ISDN number   |
| SMS          | Short Messaging Service  |
| MT           | Mobile Terminating   |
| MT URL       | onewaysms.sg's sms platform MT URL (URL for Content Provider to interface with onewaysms sms gateway to send out MT) |
| DN           | Delivery Notification. This is the notification from the Telco to indicate the status of the SMS                     |



### **3.0 Introduction**

This document is intended to be used by developers, technical architect, designer who wish to develop applications or connect their platforms to interface with onewaysms's sms gateway through HTTP connectivity.

### **4.0 System Requirement**

1. Content Provider may use any web based programming language that supports HTTP protocol
2. Onewaysms gateway will be listening on port 10002 or port 80

## 5.0 API List

onewaysms gateway expose 4 API for CP to utilize

1. Send MT message
2. Check transaction status
3. Check credit balance
4. DN URL Transaction status

## Guide to integrate with onewaysms gateway

### 5.1 Send MT message

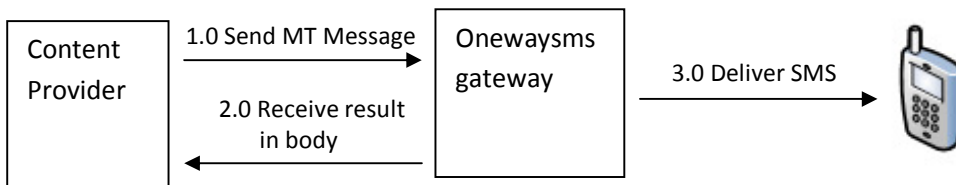


Diagram 1: Send MT Message

To send MT, CP would need to call MT URL with the appended parameter. (MT URL can be obtain from API section in your account)

Below are the HTTP parameter that are required to be appended to MT URL

| Parameter Name | Data Format | Description   |
|----------------|-------------|---|
| apiusername    | String      | Username for your API (can be obtain under API section once you have log into your account)<br>Note : API username is different from your web username)   |
| apipassword    | String      | Password for your API (can be obtain under API section once you have log into your account)<br>Note : API username is different from your web username)   |
| mobilenos      | String      | Phone number of recipient. Phone number must include country code.<br>Example : 6581234567<br>10 mobile numbers can be included in this field separated with commas (,).<br>Eg. 6581234567,6597654321 |
| senderid       | String      | Refer to sender. Field can take up to 11 alphanumeric characters.   |

|          |        |   |
|----------|--------|---|
| language | String | <p>Indicated the type of sms sent:<br/>                     "1" – Normal Text message (160 characters as 1 MT)<br/>                     "2" – Unicode Text message (70 characters as 1 MT)</p> <p>For language type 2, refer to Appendix 1 for example on conversion</p>  |
| message  | String | <p>Content of the SMS.</p> <p>Example, if language type set to 1, and message has content with length 200, 2 SMS will be sent.</p> <p>We can combine SMS. We need 7 characters to combine. Below are the character count<br/>                     1 SMS = 160 characters<br/>                     2 SMS = 306 characters (14 characters for joining)<br/>                     3 SMS = 459 characters (21 characters for joining)</p> <p>We recommend sending up to maximum 3 SMS long</p> |

Once onewaysms gateway receives a MT request, it will return a HTTP 200 response to CP

- If the value is other than 200, then it is a failed request.
- If the value is 200, CP is required to extract the message body for the result
- If the result is a negative value, some of the MT parameters are invalid (refer below for details)
- If the result is a positive value, it means our gateway successfully receive it. The result is the MT ID. (If you would like to check on transaction status, you would need to store this ID)

Below are the result that will return on the message body

| Result | Description  |
|--------|--|
| >0     | Positive value – Success<br>If multiple numbers are sent in the same request, result will display multiple MT ID, For example, 200806150001,200806150002 |
| -100   | apipassname or apipassword is invalid  |
| -200   | senderid parameter is invalid  |
| -300   | mobilenos parameter is invalid   |
| -400   | language type is invalid   |

|      |                               |
|------|-------------------------------|
| -500 | Invalid characters in message |
| -600 | Insufficient credit balance   |

Refer to Appendix 2 on URL example on sending MT

## 5.2 Check transaction status (optional to implement)

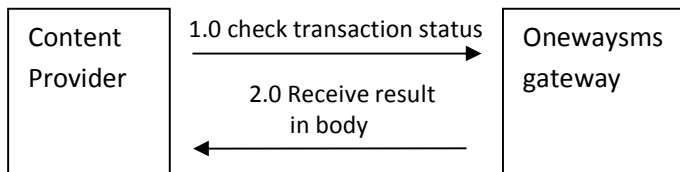


Diagram 2: Check transaction status

Once bulk MT is delivered to subscriber, Content Provider may check transaction status by calling bulk check URL (Bulk check URL can be obtain from API section in your account)

Below are the HTTP parameter that are required to be appended to MT URL

| Parameter Name | Data Format | Description  |
|----------------|-------------|--|
| mtid           | String      | MT ID received from onewaysms gateway when sending MT previously |

Below are the result that will return on the message body

| Result | Description                       |
|--------|-----------------------------------|
| 0      | Success receive on mobile handset |
| 100    | Message delivered to Telco        |
| -100   | mtid invalid / not found          |
| -200   | Message sending fail              |

Refer to Appendix 3 on URL example on check transaction status

### 5.3 Check Credit Balance (optional to implement)

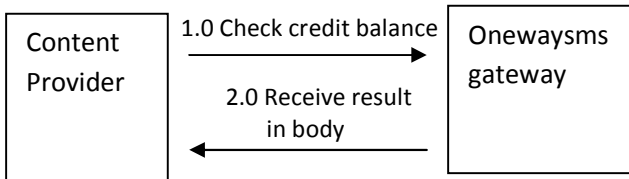


Diagram 3 : Check credit balance

Content Provider can check credit by calling check balance URL . (Check balance URL can be obtain from API section in your account)

| Parameter Name | Data Format | Description   |
|----------------|-------------|---|
| apiusername    | String      | Username for your API (can be obtain under API section once you have log into your account)<br>Note : API username is different from your web username) |
| apipassword    | String      | Password for your API (can be obtain under API section once you have log into your account)<br>Note : API username is different from your web username) |

Below are the result that will return on the message body

| Result              | Description                          |
|---------------------|--------------------------------------|
| 0 or positive value | SMS Credit balance in your account   |
| -100                | apipasname or apipassword is invalid |

Refer to Appendix 4 on URL example on check credit balance



### 5.4 DN URL Transaction Status (optional to implement)

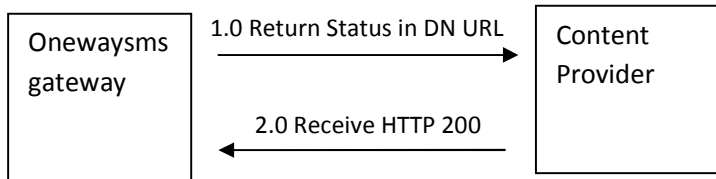


Diagram 4 : DN URL Transaction Status

One Way SMS will update the status of the SMS Transaction by calling Content Provider’s DN URL. (Content Provider can set the DN URL from your own account)

| Parameter Name | Data Format | Description  |
|----------------|-------------|--|
| mtid           | String      | MT ID received from onewaysms gateway when sending MT previously |
| status         | int         | 1 = success<br>-1 = fail   |

Refer to Appendix 5 on URL example on check credit balance

## 6.0 Appendix

### Appendix 1

For send with languagetype 2, you would need to convert the message to hexadecimal value

Below are examples on the conversion

Letter “a” : hexadecimal value is 0061

Chinese character “人” : hexadecimal value is 4EBA

Note : each character must be converted to 4 hexadecimal value. Using example “a”, some software will convert to 61, you would need to append “00” to make it “0061”

### Appendix 2

Example sending SMS with languagetype 1

<http://mturl?apiusername=123&apipassword=123&mobilenumber=6581234567&senderid=oneway sms&languagetype=1&message=hello>

Example sending SMS with languagetype 2

<http://mturl?apiusername=123&apipassword=123&mobilenumber=6581234567&senderid=oneway sms&languagetype=2&message=00680065006C006C006F>

Note : hello converted to hexadecimal is 00680065006C006C006F

### Appendix 3

Example calling check transaction status URL

<http://checkstatusurl?mtid=808010000123>

### Appendix 4

Example calling check credit balance

<http://checkcrediturl?apiusername=123&apipassword=123>

### Appendix 5

Example of DN URL calling

<http://dnurl?mtid=808010000123&status=1>